



Your Monthly Update

2 November 2023

LIAWA Landscaper



Welcome to LIAWA's monthly update, where we're thrilled to bring you the latest and most impactful developments within the association, its partners, and all industry stakeholders.

This Month's Highlights:

NGIWA & LIAWA Southwest Forum: Invitation to Sponsor/Participate

LIAWA Members Pest Watch ALERT

Tight Supply: Commercial Turf in High Demand

Greener Spaces

Changes to law on unfair contract terms

LIAWA Bank Change

An Evening with Paul Bangay - A Life in Garden Design

LIAWA Business Benchmarking Webinar

Waterwise Plants

Waterwise Garden Designs for Perth and the South West

Waterwise Smart Controller Rebates – \$300 rebates available from Water Corporation

Water Corporation - Customer Essentials Training

What's going on in Victoria's backyard

NGIWA & LIAWA Southwest Forum: Invitation to Sponsor/Participate



Landscape Industries Association WA

Nursery & Garden Industry Western Australia

Shelter Brewing Co offers the ideal setting with breathtaking views of the azure ocean, sandy beaches, and the iconic Busselton jetty.

Immerse yourself in a program featuring speakers discussing topics pertinent to Growers, Retailers, and Landscapers.

Connect with fellow members of LIAWA and NGIWA for a networking experience. This event is not to be missed.

Where: Shelter Brewing Co. 11 Foreshore Parade, Busselton WA 6280

When: Friday 17th November 11am til 4pm (with sundowner)

Cost: \$55 per person for non members/additional tickets.
2 Free tickets to South-west only financial members.

Water WA

Shelter

NATURALISTE LANDSCAPE SUPPLIES

The NGIWA/LIAWA Southwest Forum is a remarkable event organized by the Landscape Industries Association of Western Australia (LIAWA) in collaboration with Nursery & Garden Industry WA (NGIWA).

This forum is specifically designed to provide a comprehensive and immersive program tailored for local landscapers, designers, nursery growers, maintenance operatives, pavers and hard landscapers, plus all individuals involved or interested in the professional landscape and green life industries.

Word on the ground is that the local landscaping industry is buoyant and prospering with landscape packages, new estates being opened and new builds in abundance.

The soon to be completed Hilton Garden Hotel, Busselton is offering an opportunity to view its landscapes to Forum delegates, which may attract up to 80 landscape and nursery professionals.

This Forum features a lineup of distinguished speakers, including leading scientists, ecologists, environmental specialists, landscaping and design professionals, educators and industry leaders. They will contribute expertise and insights to advance the landscape and green life industries.

This event is supported by the Water Corporation and is a collaborative effort with Nursery & Garden Industry WA (NGIWA).

Local supplier Naturaliste Landscaping Supplies is the confirmed Sponsor Partner for the Forum and there are other opportunities for sponsorship and/or participation for all LIAWA members.

Please see [the attached sponsor prospectus and draft program](#).

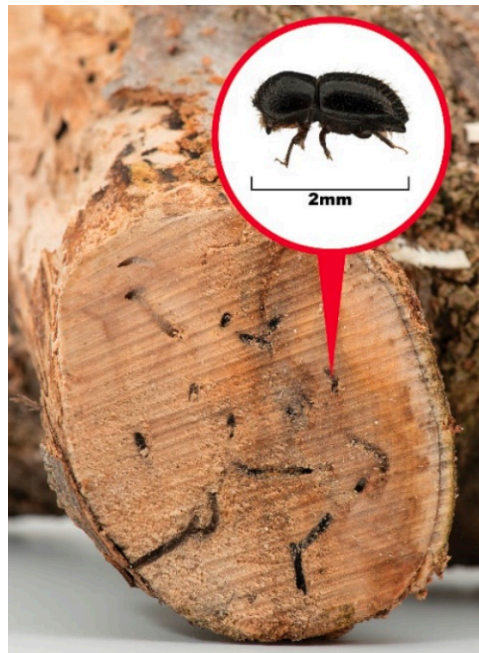
Please note that Shelter Brewing has been kind enough to donate the venue for the Forum and the Water Corporation is a NGIWA and LIAWA partner and a big supporter of this event.

Book Your Tickets here by 10th November

If you are interested in one of the sponsor opportunities at the NGIWA/LIAWA Southwest Forum, please email liawaexec@landscaping.net.au or call Christine Stanton 0497 120 519 if possible by COB 6 November, 2023.

LIAWA Members Pest Watch ALERT

The Quarantine Area (QA) for exotic pest Polyphagous shot-hole borer (PSHB) has been expanded to support the Department of Primary Industries and Regional Development's (DPIRD) ongoing surveillance program to determine the spread of the pest. <https://www.wa.gov.au/government/announcements/quarantine-area-borer-expanded-support-surveillance>



A new Quarantine Area Notice (QAN) has come into effect and now covers 17 local government areas, including Cambridge, Canning, Claremont, Cockburn, Cottesloe, East Fremantle, Fremantle, Melville, Mosman Park, Nedlands, Peppermint Grove, Perth, South Perth, Stirling, Subiaco, Victoria Park and Vincent. It is likely that the quarantine area may have to be expanded.

Darren Seinor, LIAWA President wants landscapers to be aware to stick to the 'green waste' movement. "Members are encouraged not to move mulches and plants from the quarantine area to outside the quarantine area in an attempt to reduce the spread of this pest."

The WA government is encouraging the community to sign up and search for pests that pose a risk to agriculture and the environment. The Department of Primary Industries and Regional Development (DPIRD) is running its annual [Biosecurity Blitz](#).

The Polyphagous shot-hole borer (PSHB) is a beetle native to Southeast Asia. The beetles attack a wide range of plants by tunnelling into trunks, stems and branches. PSHB has a symbiotic relationship with a Fusarium fungus, cultivating it inside the tree as a food source. In susceptible trees, the fungus kills vascular tissue causing Fusarium dieback and tree death.

Establishment of this pest in WA may have significant impact on amenity trees, native vegetation, and the fruit and nut tree industries. Concerns are being expressed by the Green Space Alliance around several trees. The host list is extensive with over 400 hosts including Maple (Acer), Oak (Quercus), Plane (Platanus), Coral tree (Erythrina), Avocado (Persea) and Willows (Salix). PSHB causes serious damage to many types of trees, but it particularly loves to hide in the box elder maple (Acer negundo). Apart from the potential devastating impact on domestic and commercial landscapes, some WA's iconic tourist locations and their native trees and vegetation is potentially under threat, so if you see it in your work, **please report it.**

The Department of Primary Industries and Regional Development (DPIRD) is working with the community, industry and State and Commonwealth Governments to minimise the impact of this pest.

[The WA government is encouraging the community to sign up and search for pests that pose a risk to agriculture and the environment. Report your findings by uploading photos to their website or App.](#)

Tight Supply: Commercial Turf in High Demand

Turf Growers' Association WA are giving LIAWA members the heads up on Commercial Turf availability. Eva Ricci (EO Turf WA) recommends "please ask your members to place their orders in advance with Turf Growers' Association WA members to secure their turf requirements for significant projects". Supplies of turf in WA are in high demand at this time of year and as the landscaping industry is extremely busy over the coming months, it may serve LIAWA members well to plan ahead to ensure their projects keep on track.



Greener Spaces

Urban trees are more important than ever.

The approaching hot summer has ecophysiologists quite concerned about our city trees. According to [recent research](#), the following popular urban trees are essentially in danger:

Red maple (*Acer rubrum*), tulip poplar (*Liriodendron tulipifera*), coast banksia (*Banksia integrifolia*), and water gum (*Tristaniopsis laurina*) were among the species susceptible to heat-related dieback or death.

Weeping bottlebrush (*Callistemon viminalis*), kurrajong (*Brachychiton populneus*), Chinese elm (*Ulmus parvifolia*) and ash (*Fraxinus excelsior*), and weeping bottlebrush were among the species least susceptible to heat.

[Read more...](#)



Changes to law on unfair contract terms

From November 2023, proposing, using or relying on unfair contract terms in standard form contracts will be banned and penalties for breaches will apply.

[Read more...](#)

LIAWA Bank Change

Due to Bankwest closing their business accounts, LIAWA has moved its banking to Bank of Queensland.

We kindly request that you update your system to reflect the new account details provided below.



Bank: **Bank of Queensland (Floreat Park)**

Account Name: **Landscape Industries Association of WA Inc**

BSB: 126-577

Account: 23452688

If you require further information, please do not hesitate to contact us:

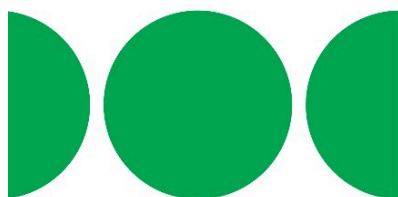
Christine (Executive officer): 0497 120 519 (Monday, Tuesday and Thursday)

Lesley (Finance Officer): accounts@landscaping.net.au

Thank you for your continued support.

An Evening with Paul Bangay: A Life in Garden Design

PAUL BANGAY



A LIFE IN GARDEN DESIGN

Thomas
& Hudson

A Life In Garden Design, is an illustrated memoir exploring the evolution of one of Australia's finest design minds. A visual delight, it ranges from photos of childhood gardens and goats to hand-drawn plans for Paul's earliest designs. Through never-before-seen materials, the story behind Paul's vision is revealed – and we see the creative workings that come to fruition in meticulous and timeless gardens.

LIAWA is partnering with **Boffins Books** to host **Paul Bangay**.

Paul Bangay is Australia's most sought-after garden designer, with close to *forty years' experience*.

Known for his *mastery of scale, balance, form and colour*, Paul draws on his lifelong study of the natural and classical worlds to create gardens around the globe.



**TUESDAY 21ST
NOVEMBER
6:30PM - 7:30PM**

Theatre Auditorium, The University Club
The University of Western Australia
Entrance 1, Hackett Drive, Crawley WA 6009
From \$15, ticket with book options available

An Evening With Paul Bangay: A Life In Garden Design



Book Tickets

WHEN

Tuesday, 21st November
6:30pm – 7:30pm

WHERE ([SEE MAP](#))

Theatre Auditorium, The University Club
The University of Western Australia
Entrance 1, Hackett Drive
Crawley WA 6009

COST

From \$15, ticket with book options available

ENQUIRIES

Boffins Books on 9321 5755 or info@boffinsbooks.com.au

Join Boffins Books and the Landscape Industries Association of WA Inc. (LIAWA) for an in-conversation event with [Paul Bangay: A Life in Garden Design](#).

[Read more...](#)

LIAWA Business Benchmarking Webinar

ONLINE EVENT FOCUS

LIAWA is partnering with Business Benchmark Group to provide a free professional business building workshop online

STAYING AHEAD OF THE PACK: LEADING INTO THE HOLIDAY HUSTLE PERIOD

TUESDAY 28TH NOVEMBER 5:30PM
ONLINE WORKSHOP
with **STEFAN KAZAKIS**



ONLINE EVENT FOCUS

LIAWA has responded to requests from members for business support and benchmarking tools to enhance their business operations.

As a result, LIAWA has been in discussions with BBG to create a workshop to support W.A. landscapers and garden designers with meeting their business demands and compliance.

This workshop is specifically designed for LIAWA members, offering guidance in setting milestones, monitoring progress, and achieving results in sustainable and ongoing growth.

From managing supply chains, staff shortages, managing contracts and rising business costs. Stefan Kazakis from BBG will lead the discussions to work smarter, more profitably and reduce the time it takes to manage your business.

Get ready to learn:

- The 3 most important 'growth-hack' activities in your business
- Which of your jobs are profitable and how to win more of them
- How to get off the tools so you can work on growing your business
- How to recruit and lead the team you need to get off the tools

ONLINE EVENT FOCUS

ONLINE EVENT FOCUS

Unlock Your Business Potential: FREE Professional Development for LIAWA Members!

Join our online event, 'Staying Ahead of the Pack: Leading into the Holiday Hustle Period.'

LIAWA recommend members take advantage of this targeted approach to professional business development which is available free to LIAWA members only.

You will likely learn something that you can start implementing immediately. If you value your business, your people and your clients, you should take advantage of this free LIAWA members-only workshop

Secure Your FREE Spot Now

Waterwise Plants

Did you know we use almost half of our household water in our gardens? So choosing waterwise plants makes sense – they're low-fuss and they look great.



Plants suited to our climate need less water, are low maintenance and will look great in your garden. Use the Waterwise plants directory from the Water Corporation to find waterwise plants that will grow best where you live.

[Find out what plant thrive in your area](#)

Waterwise Garden Designs for Perth and the South West

Perth and South West designs are currently live on the Water Corporation website. The remaining regions are due to be uploaded in early November.



The Water Corporation's plans provide the blueprint for creating different styles of gardens that are both beautiful and fit for our climate. Below are their favourite designs using plants that are waterwise and easy to maintain. They've included three plans from different perspectives for each garden design type – the front façade, a close-up and birds-eye view.

[Find out the garden designs plans and shopping lists](#)

Waterwise Smart Controller Rebates – \$300 rebates available from Water Corporation

Rising Demand Soars for Waterwise Smart Controller Rebates – \$300 rebates available from Water Corporation

LIAWA members and Waterwise irrigators are reminded that if you want your clients to save water and money at the same time, please take advantage of the Water Corporation's Metropolitan offers - Weather-based Irrigation Controller. Rainbird and Hunter have a range of options eligible for the rebate. [https://www.watercorporation.com.au/Waterwise/Waterwise-offers/Weather-based-Irrigation-](https://www.watercorporation.com.au/Waterwise/Waterwise-offers/Weather-based-Irrigation-Controller-Rebate)

[Controller-Rebate](#)

Water Corporation - Customer Essentials Training

Customer Essentials Training NOW LIVE!

We exist for and because of our customers. They are the heart of our business and it's important we continue to adapt and learn about our customers' needs and provide the very best service possible. Water Corporation's extensive research has found high-valued customer experiences lead to more revenue, growth, and trust in your business.

They are investing in you and providing you with expert strategies to make your customers feel valued, to keep them coming back.

The Customer Essentials Training consists of 5 modules:



By participating in this program, you are demonstrating a commitment to providing customers with exceptional service that will set you apart from the wider industry and further strengthen our partnership and the Waterwise brand.

Please see the website link below to access the training and register (you will need to create an account if you have not had one previously):

[Customer Essentials Training - Water Corporation](#)



What's going on in Victoria's backyard

It's always interesting to take a peek into someone else's backyard, especially when it comes the landscape design, construction and maintenance.

Check out the 2023 Victorian Landscape Awards, just announced at https://www.landscapingvictoria.com.au/news-events/lvml-landscaping-industry-awards?utm_source=outdoordesign&utm_medium=outdoordesign_medium&utm_campaign=outdoordesign_campaign.



Working together to help
your business thrive



Tag us in your garden
creations to feature on our
social pages

@liawa_inc

Seasonal Climate Information

Click [here](#)



THANK YOU TO OUR VALUED PARTNERS

MAJOR
PARTNERS



ELITE
PARTNERS



PODCAST
SPONSORS



MEDIA
PARTNERS



You have received this email as a member of
Landscaping Industries Association of WA Inc. (LIAWA)
or you signed up via our website.
<https://landscaping.net.au>

PO Box 390 Floreat Forum WA 6014
Ph; 0497 120 519 (Mon, Tues and Thurs)

Copyright © 2023 Landscape Industries Association WA
All rights reserved.

office@landscaping.net.au